

DF10.103M

Lavoce

1" ANNULAR COMPRESSION DRIVER

FERRITE MAGNET

PRELIMINARY

- 1 INCH CCAW VOICE COIL
- 109 dB/SPL SENSITIVITY
- 50 W PROGRAM POWER HANDLING
- FEM OPTIMIZED MOTOR, PHASEPLUG AND DIAPHRAGM
- 1200 - 20000 Hz FREQUENCY RANGE
- POLYESTER DIAPHRAGM AND SURROUND
- ANNULAR DIAPHRAGM DESIGN
- HIGH SENSITIVITY WITH LOW DISTORTION
- EXTENDED LOW FREQUENCY TO 1900 Hz



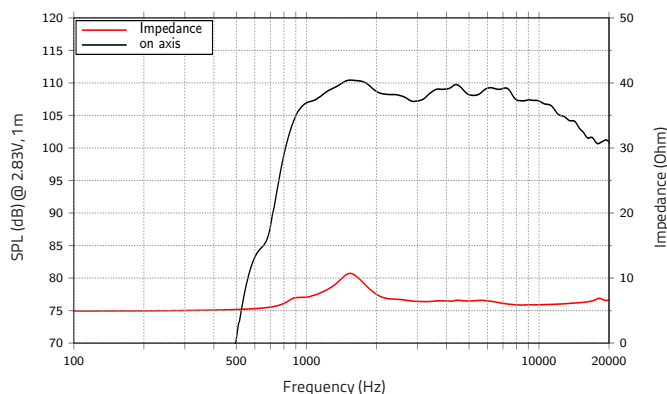
GENERAL SPECIFICATIONS

Throat diameter	mm (in.)	25,4 (1)
Nominal impedance	Ω	8
Minimum impedance	Ω	6
Program power (1)	W	50
AES Power rating (2)	W	25
Sensitivity (3)	dB	109
Frequency range	Hz	1200 ÷ 20000
Voice coil diameter	mm (in.)	25,4 (1)
Magnet material		Ferrite
Magnet OD	mm (in.)	85 (3.35)
Coil material		CCA W
Former material		Kapton
Diaphragm material		Polyester
Surround material		Polyester
Voice coil Inductance	mH	0,035
Flux density	T	1,75
Recommended crossover (4)	Hz	1900
Driver displacement volume	l (ft ³)	0,2 (0.007)

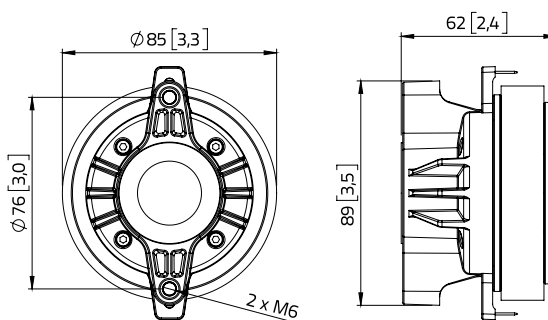
SHIPPING INFORMATION

Net weight	kg (lb.)	0,82 (1.8)
Multipack size (18)	mm (in.)	411 x 375 x 188 (16.2 x 14.8 x 7.4)
Multipack weight	kg (lb.)	16,8 (37)

FREQUENCY RESPONSE



DIMENSIONS mm (in.)



(1) Program power is defined as 3 dB greater than AES Power. (2) Horn loaded test for 2h with continuous, band-limited (1900-20000 Hz, 12dB/oct.) pink noise as per AES 2-1984 Rev. 2003. (3) Measured on axis at 2.83V, 1m, driver loaded with HD1003 horn, SPL averaged in the frequency range 1200 ÷ 20000 Hz. (4) High pass filter with slope 12dB/oct. or higher.

All specifications subject to change without notice_H.a

WWW.LAVOCESPEAKERS.COM



Lavoce Italiana

sales@lavocespeakers.com sales.cn@lavocespeakers.com