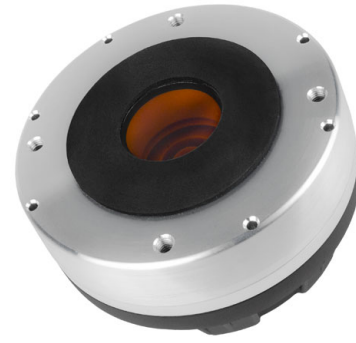


# HF1460

1.4" - 120 W - 109 dB - 8 Ohm



## NOMINAL SPECIFICATIONS

Throat Diameter	35.8 mm (1.4 in)
Overall Diameter	120 mm (4.7 in)
90° Mounting Holes Diameter (4xM6)	102 mm (4.02 in)
Depth	65 mm (2.6 in)
<b>Net Weight</b>	<b>2.0 kg (4.5 lb)</b>
Shipping Box (Single carton box)	185 x 170 x 102 mm (7.3 x 6.7 x 4.0 in)
Shipping Weight	2.1 kg (4.6 lb)

## PART NUMBER

Faston Terminals - 8 Ohm Version	00864360
----------------------------------	----------

## NOTES:

- (1) 2 Hours Test According to AES 2-1984 Rev. 2003
- (2) Maximum power is defined as 3dB greater than nominal power.
- (3) 12 dB/oct or higher slope high-pass filter
- (4) Averaged within the frequency range
- (5) The phase plug is recessed from the driver's exit which is at the end of a conical adaptation horn.

## TECHNICAL PARAMETERS

Nominal Impedance	8 Ohm
Minimum Impedance	7 Ohm
AES Power Handling (1)	120 W
<b>Maximum Power Handling (2)</b>	<b>240 W</b>
Minimum Crossover Frequency (3)	1 kHz
<b>Sensitivity (1W/1m) (4)</b>	<b>109 dB</b>
Frequency Range	0.6-18 kHz
<b>Voice Coil Diameter</b>	<b>86 mm (3.4 in)</b>
<b>Winding Material</b>	<b>Al</b>
Former Material	Kapton
<b>Diaphragm Material</b>	<b>Carbon Fiber</b>
Diaphragm Shape	Dome
Winding Depth	3.4 mm (0.13 in)
Magnetic Gap Depth	4 mm (0.16 in)
Flux Density	2.2 T
Magnet	Neodymium Ring
Re	5.6 Ohm
Phase Plug Design	Annular
Exit Angle (5)	Cylindrical
NET Air Volume filled by HF Driver	0.65 dm <sup>3</sup> (0.023 ft <sup>3</sup> )

