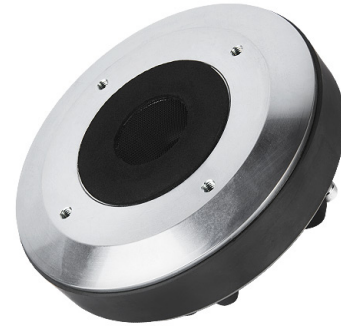


# HF143

1.4" - 100 W - 108 dB - 16 Ohm



## NOMINAL SPECIFICATIONS

Throat Diameter	35.6 mm (1.4 in)
Overall Diameter	156 mm (6.14 in)
90° Mounting Holes Diameter (4xM6)	102 mm (4.02 in)
Depth	64.5 mm (2.54 in)
<b>Net Weight</b>	<b>4.0 kg (8.8 lb)</b>
Shipping Box (Single carton box)	195 x 195 x 141 mm (7.7 x 7.7 x 5.6 in)
Shipping Weight	4.2 kg (9.3 lb)

## PART NUMBER

Push Terminals - 16 Ohm Version	00744247
---------------------------------	----------

## NOTES:

- (1) 2 Hours Test According to AES 2-1984 Rev. 2003
- (2) Maximum power is defined as 3dB greater than nominal power.
- (3) 12 dB/oct or higher slope high-pass filter
- (4) Averaged within the frequency range
- (5) The phase plug is recessed from the driver's exit which is at the end of a conical adaptation horn.

## TECHNICAL PARAMETERS

Nominal Impedance	16 Ohm
Minimum Impedance	10.3 Ohm
<b>AES Power above 0.9 kHz (1)</b>	<b>100 W</b>
AES Power above 0.65 kHz	50 W
<b>Maximum Power above 0.9 kHz (2)</b>	<b>200 W</b>
Maximum Power above 0.65 kHz	100 W
Minimum Crossover Frequency (3)	0.9 kHz
<b>Sensitivity (1W/1m) (4)</b>	<b>108 dB</b>
Frequency Range	0.5÷18 kHz
<b>Voice Coil Diameter</b>	<b>74 mm (2.91 in)</b>
<b>Winding Material</b>	<b>Al</b>
Former Material	Kapton
<b>Diaphragm Material</b>	<b>Titanium</b>
Diaphragm Shape	Dome
Winding Depth	2.45 mm (0.10 in)
Magnetic Gap Depth	3.2 mm (0.13 in)
Flux Density	1.6 T
Magnet	Ferrite Ring
Re	8.2 Ohm
Phase Plug Design	Annular
Exit Angle (5)	6° Conical
NET Air Volume filled by HF Driver	0.73 dm <sup>3</sup> (0.026 ft <sup>3</sup> )

