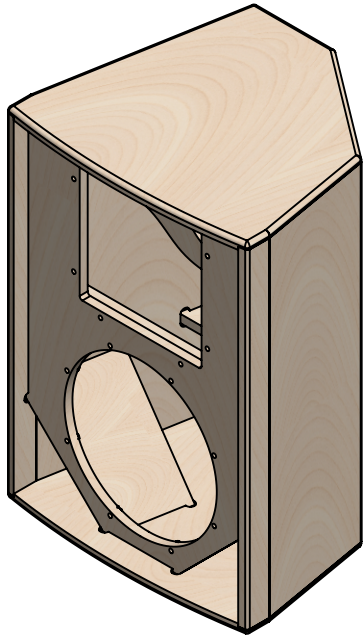
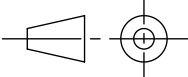


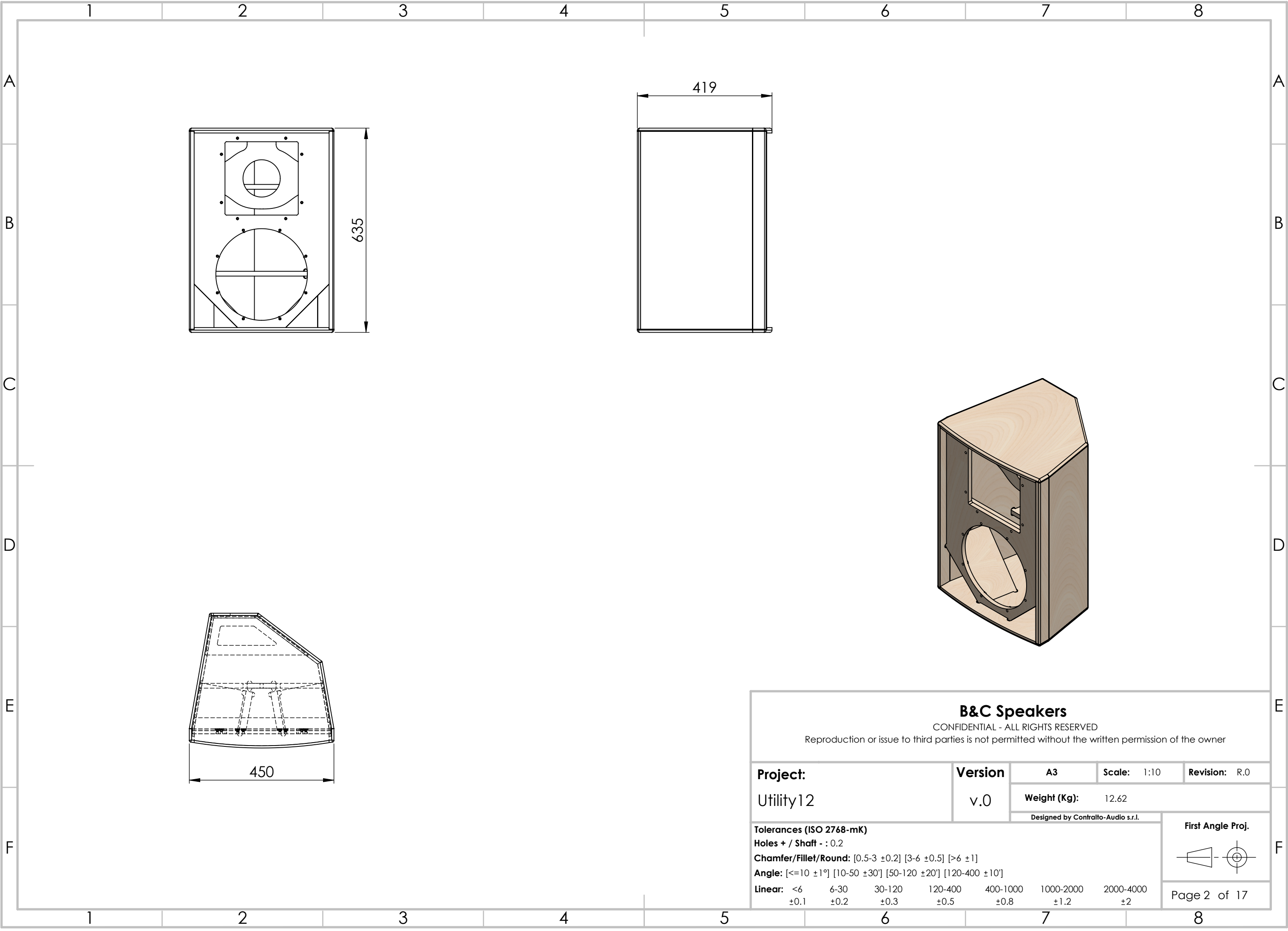


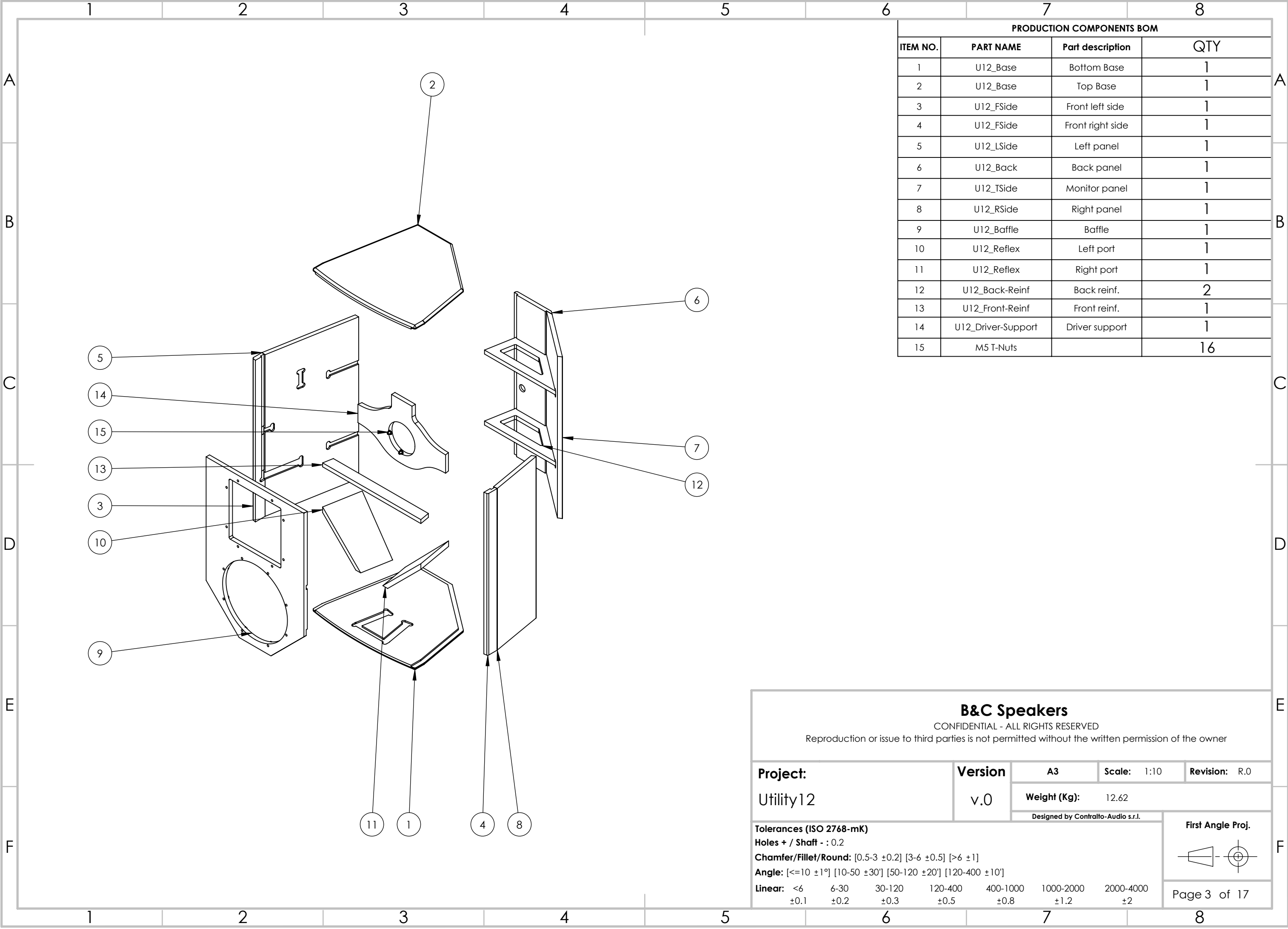
Utility12

Multipurpose point-source



<div>B&amp;C Speakers</div> <div>CONFIDENTIAL - ALL RIGHTS RESERVED</div> <div>Reproduction or issue to third parties is not permitted without the written permission of the owner</div>							
Project:  Utility12	Version  v.0	A3	Scale: 1:10	Revision: R.0			
		Weight (Kg): 12.62					
		Designed by Contralto-Audio s.r.l.				<div>First Angle Proj.</div> <div></div>	
<div>Tolerances (ISO 2768-mK)</div> <div>Holes + / Shaft - : 0.2</div> <div>Chamfer/Fillet/Round: [0.5-3 ±0.2] [3-6 ±0.5] [&gt;6 ±1]</div> <div>Angle: [&lt;=10 ±1°] [10-50 ±30°] [50-120 ±20°] [120-400 ±10°]</div> <div>Linear: &lt;6 6-30 30-120 120-400 400-1000 1000-2000 2000-4000</div> <div>±0.1 ±0.2 ±0.3 ±0.5 ±0.8 ±1.2 ±2</div>							





PRODUCTION COMPONENTS BOM			
ITEM NO.	PART NAME	Part description	QTY
1	U12_Base	Bottom Base	1
2	U12_Base	Top Base	1
3	U12_FSide	Front left side	1
4	U12_FSide	Front right side	1
5	U12_LSide	Left panel	1
6	U12_Back	Back panel	1
7	U12_TSide	Monitor panel	1
8	U12_RSide	Right panel	1
9	U12_Baffle	Baffle	1
10	U12_Reflex	Left port	1
11	U12_Reflex	Right port	1
12	U12_Back-Reinf	Back reinf.	2
13	U12_Front-Reinf	Front reinf.	1
14	U12_Driver-Support	Driver support	1
15	M5 T-Nuts		16

**B&C Speakers**

CONFIDENTIAL - ALL RIGHTS RESERVED

Reproduction or issue to third parties is not permitted without the written permission of the owner

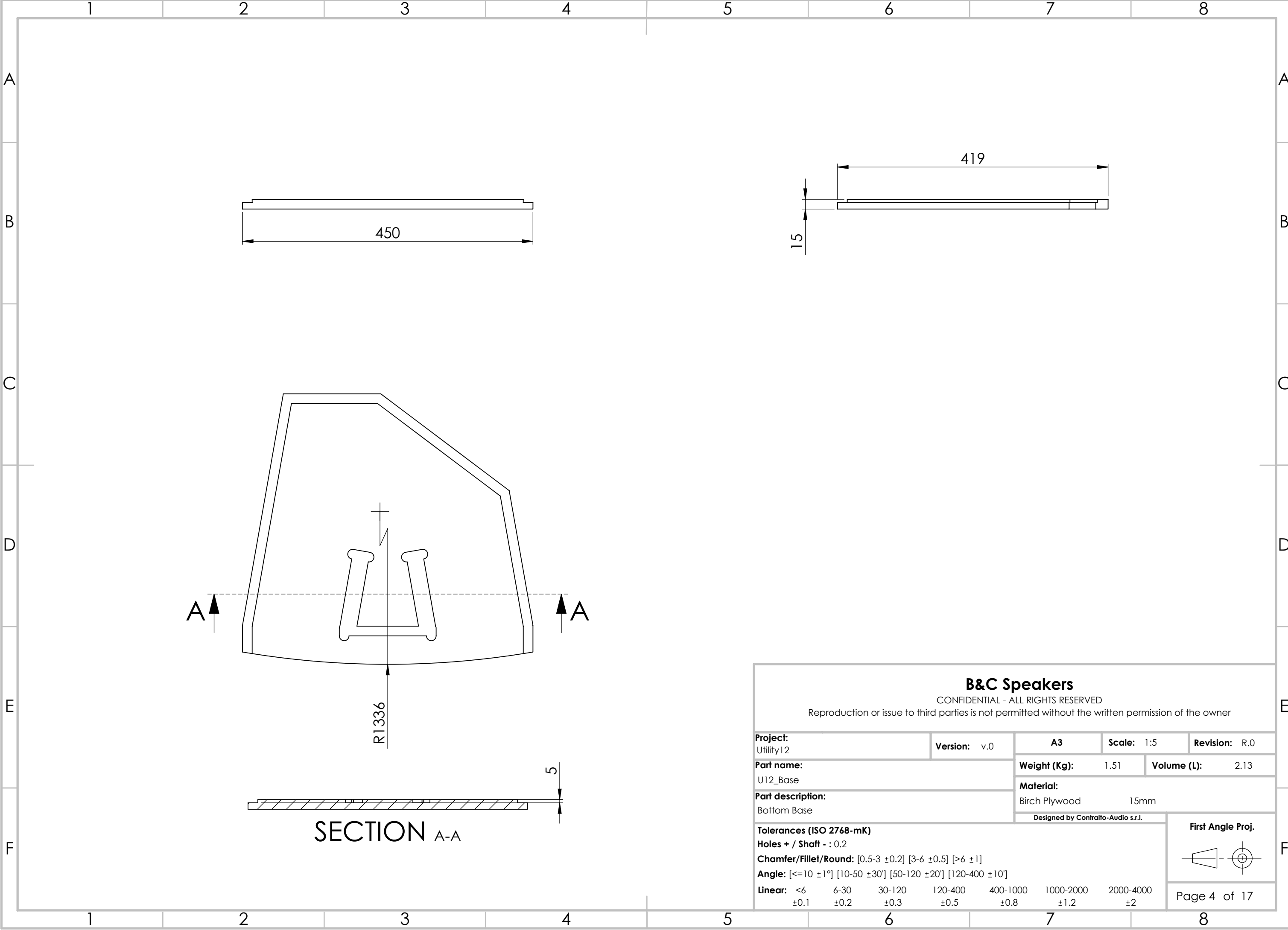
<b>Project:</b> Utility12	<b>Version</b> v.0	<b>A3</b>	<b>Scale:</b> 1:10	<b>Revision:</b> R.0
		<b>Weight (Kg):</b> 12.62		
		Designed by Contralto-Audio s.r.l.		

**Tolerances (ISO 2768-mK)**  
**Holes + / Shaft - :** 0.2  
**Chamfer/Fillet/Round:** [0.5-3 ±0.2] [3-6 ±0.5] [>6 ±1]  
**Angle:** [<=10 ±1°] [10-50 ±30'] [50-120 ±20'] [120-400 ±10']  
**Linear:**

<6	6-30	30-120	120-400	400-1000	1000-2000	2000-4000
±0.1	±0.2	±0.3	±0.5	±0.8	±1.2	±2

**First Angle Proj.**

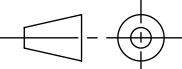
Page 3 of 17

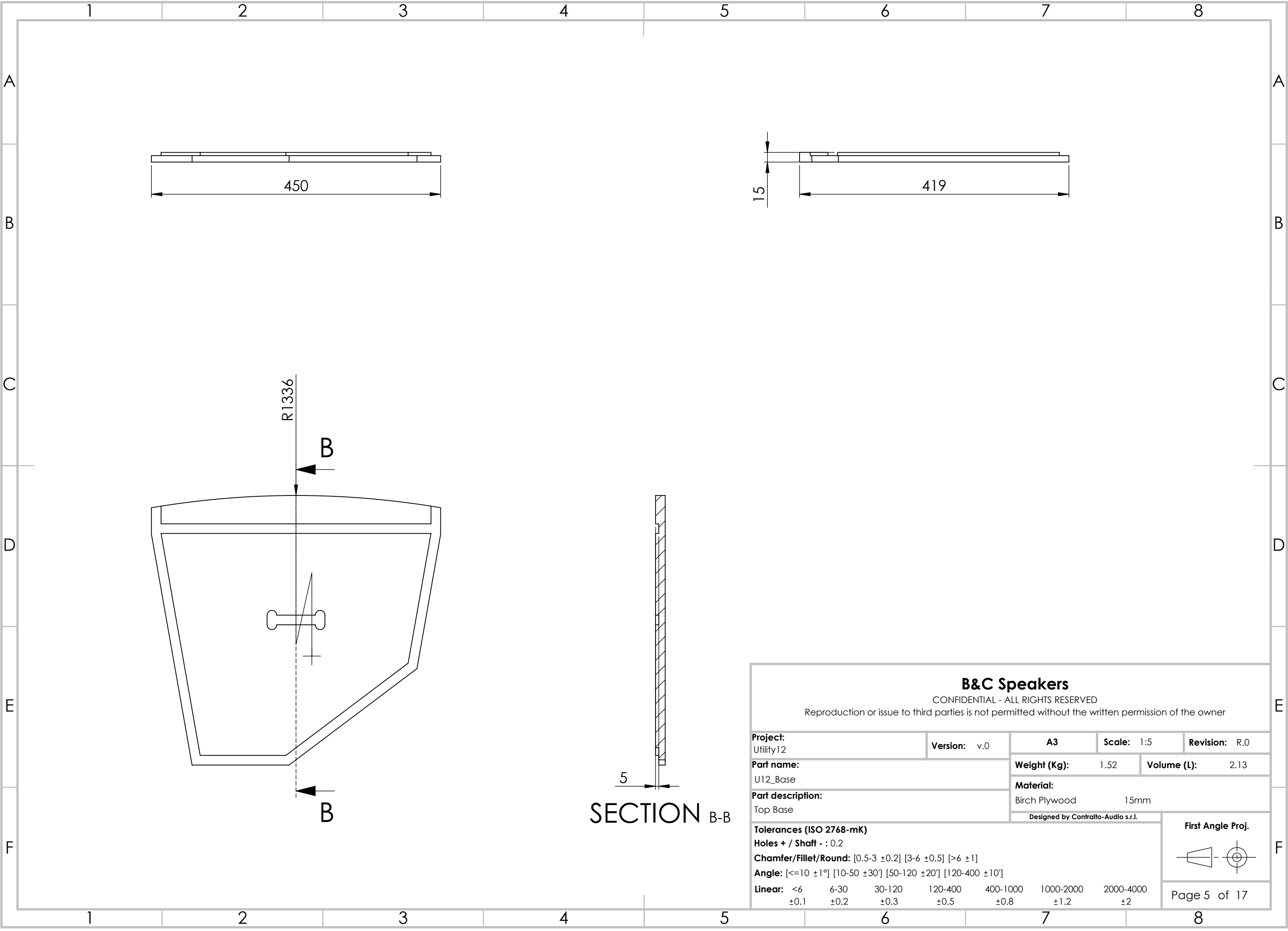


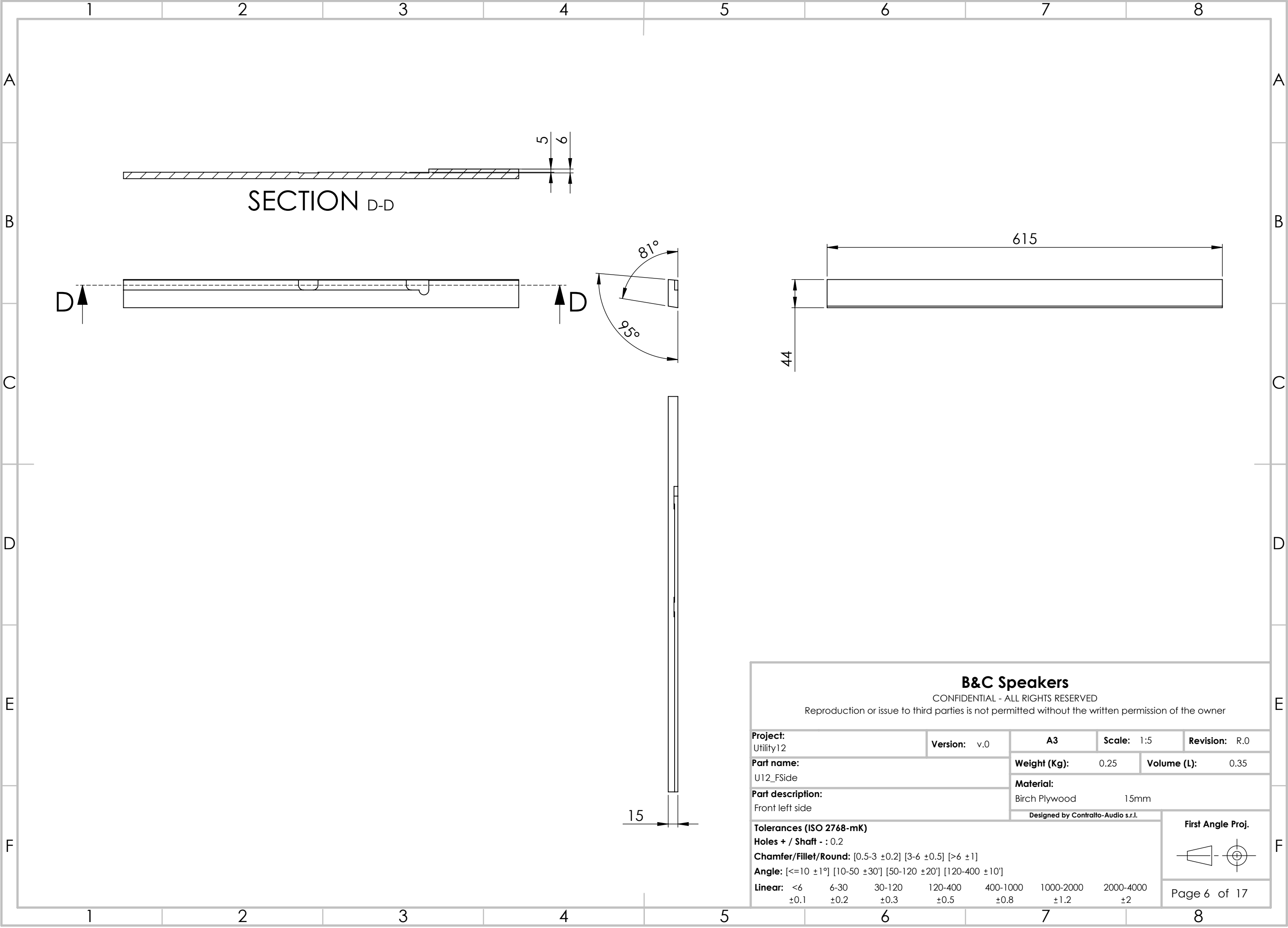
**B&C Speakers**

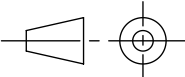
CONFIDENTIAL - ALL RIGHTS RESERVED

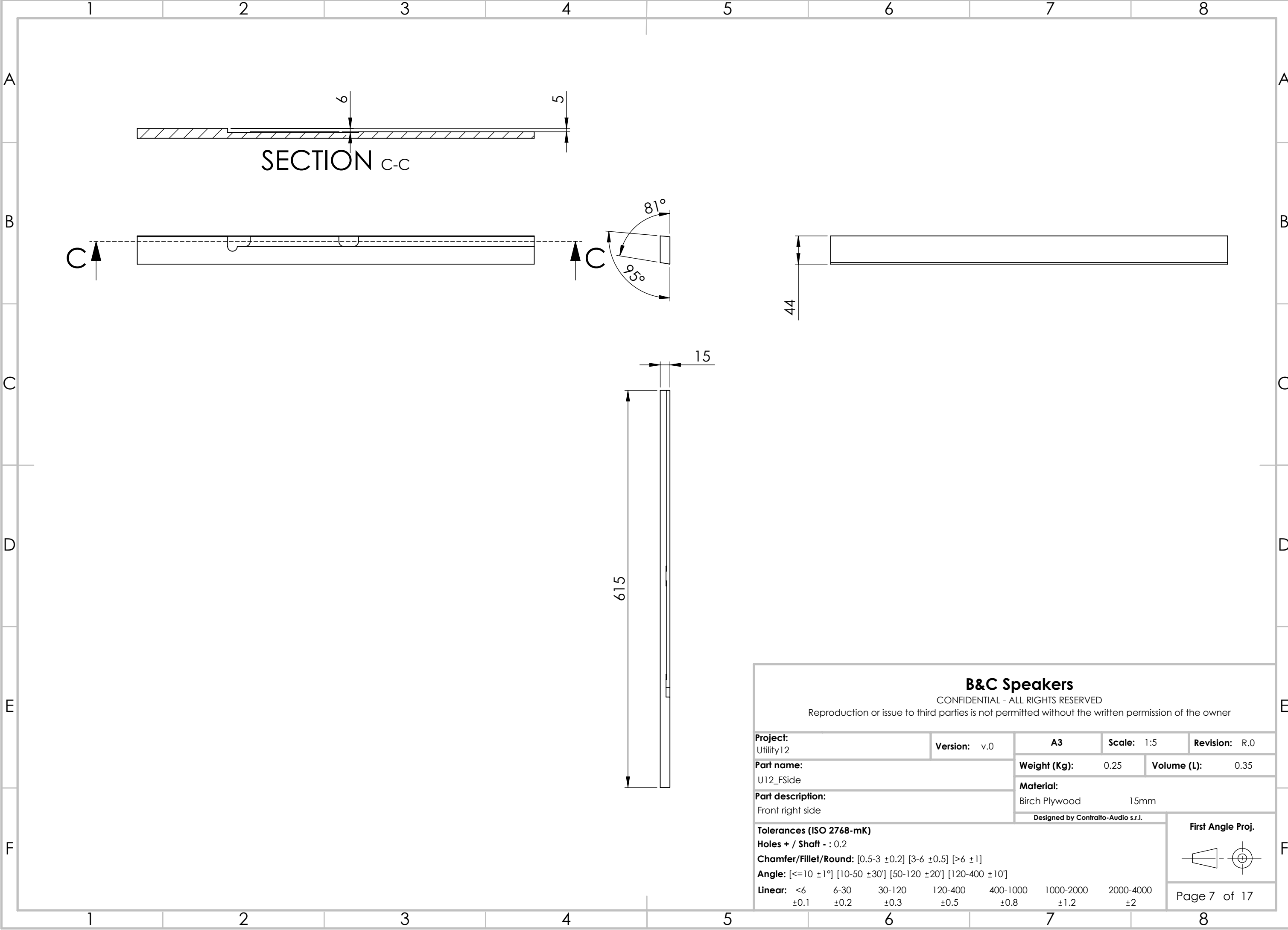
Reproduction or issue to third parties is not permitted without the written permission of the owner

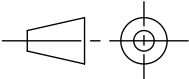
<b>Project:</b> Utility12			<b>Version:</b> v.0		<b>A3</b>		<b>Scale:</b> 1:5		<b>Revision:</b> R.0		
<b>Part name:</b> U12_Base					<b>Weight (Kg):</b> 1.51			<b>Volume (L):</b> 2.13			
<b>Part description:</b> Bottom Base					<b>Material:</b> Birch Plywood 15mm						
					Designed by Contralto-Audio s.r.l.				<b>First Angle Proj.</b> 		
<b>Tolerances (ISO 2768-mK)</b> <b>Holes + / Shaft - : 0.2</b> <b>Chamfer/Fillet/Round:</b> [0.5-3 ±0.2] [3-6 ±0.5] [>6 ±1] <b>Angle:</b> [<=10 ±1°] [10-50 ±30°] [50-120 ±20°] [120-400 ±10°] <b>Linear:</b> <6 6-30 30-120 120-400 400-1000 1000-2000 2000-4000 ±0.1 ±0.2 ±0.3 ±0.5 ±0.8 ±1.2 ±2											
Page 4 of 17											

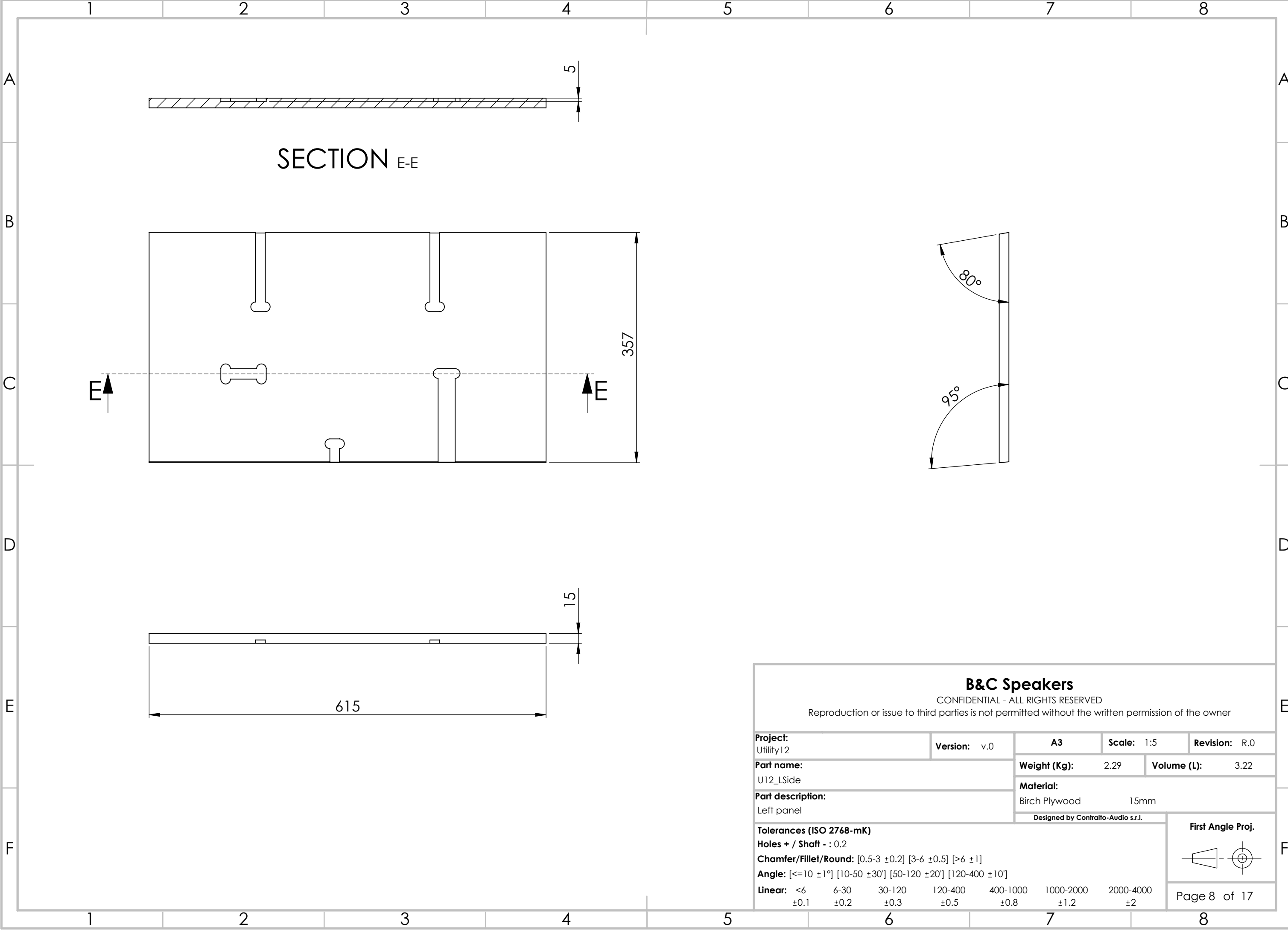




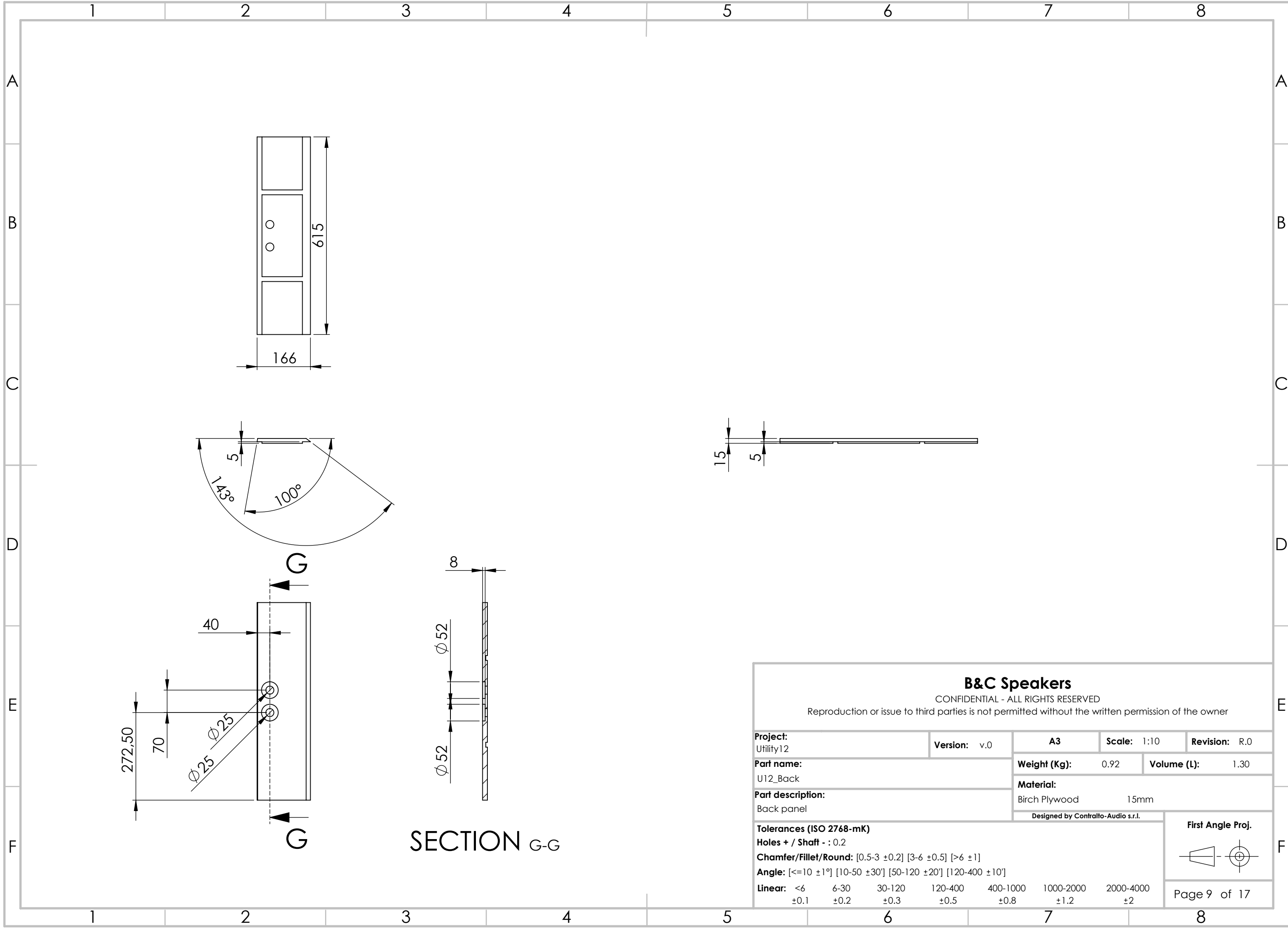
B&C Speakers						
CONFIDENTIAL - ALL RIGHTS RESERVED						
Reproduction or issue to third parties is not permitted without the written permission of the owner						
Project: Utility12		Version: v.0	A3	Scale: 1:5	Revision: R.0	
Part name: U12_FSide			Weight (Kg): 0.25		Volume (L): 0.35	
Part description: Front left side			Material: Birch Plywood 15mm			
Designed by Contralto-Audio s.r.l.				<div>First Angle Proj.</div> <div></div>		
Tolerances (ISO 2768-mK)						
Holes + / Shaft - : 0.2						
Chamfer/Fillet/Round: [0.5-3 ±0.2] [3-6 ±0.5] [>6 ±1]				<div>Page 6 of 17</div>		
Angle: [<=10 ±1°] [10-50 ±30'] [50-120 ±20'] [120-400 ±10']						
Linear: <6 ±0.1    6-30 ±0.2    30-120 ±0.3    120-400 ±0.5    400-1000 ±0.8    1000-2000 ±1.2    2000-4000 ±2						

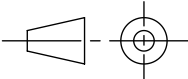
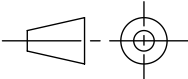


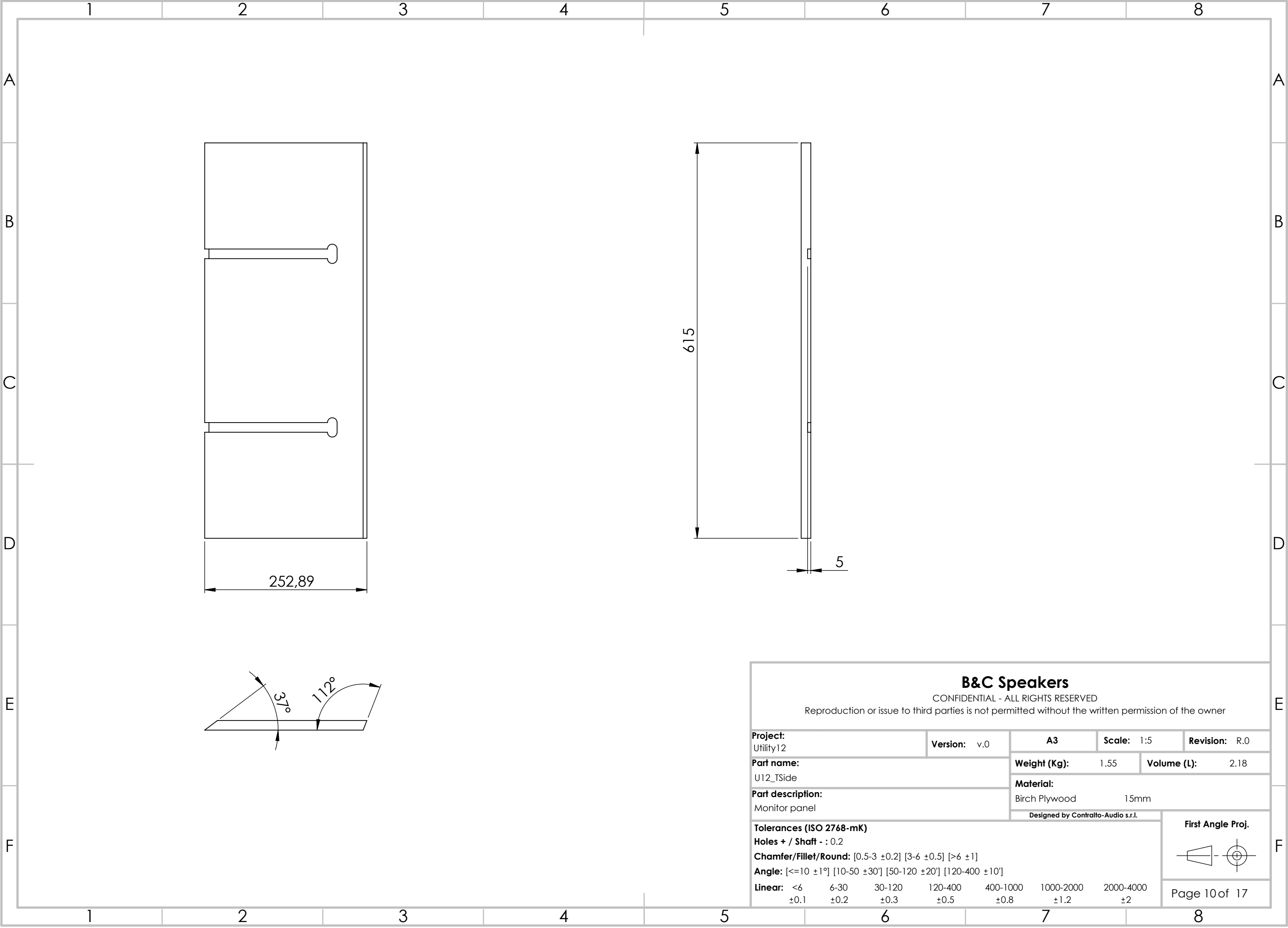
B&C Speakers							
CONFIDENTIAL - ALL RIGHTS RESERVED							
Reproduction or issue to third parties is not permitted without the written permission of the owner							
Project: Utility12		Version: v.0		A3	Scale: 1:5		Revision: R.0
Part name: U12_FSide				Weight (Kg): 0.25		Volume (L): 0.35	
Part description: Front right side				Material: Birch Plywood 15mm			
				Designed by Contralto-Audio s.r.l.		First Angle Proj.	
Tolerances (ISO 2768-mK)							
Holes + / Shaft - : 0.2							
Chamfer/Fillet/Round: [0.5-3 ±0.2] [3-6 ±0.5] [>6 ±1]							
Angle: [<=10 ±1°] [10-50 ±30°] [50-120 ±20°] [120-400 ±10°]							
Linear: <6 ±0.1		6-30 ±0.2	30-120 ±0.3	120-400 ±0.5	400-1000 ±0.8	1000-2000 ±1.2	2000-4000 ±2
				Page 7 of 17			

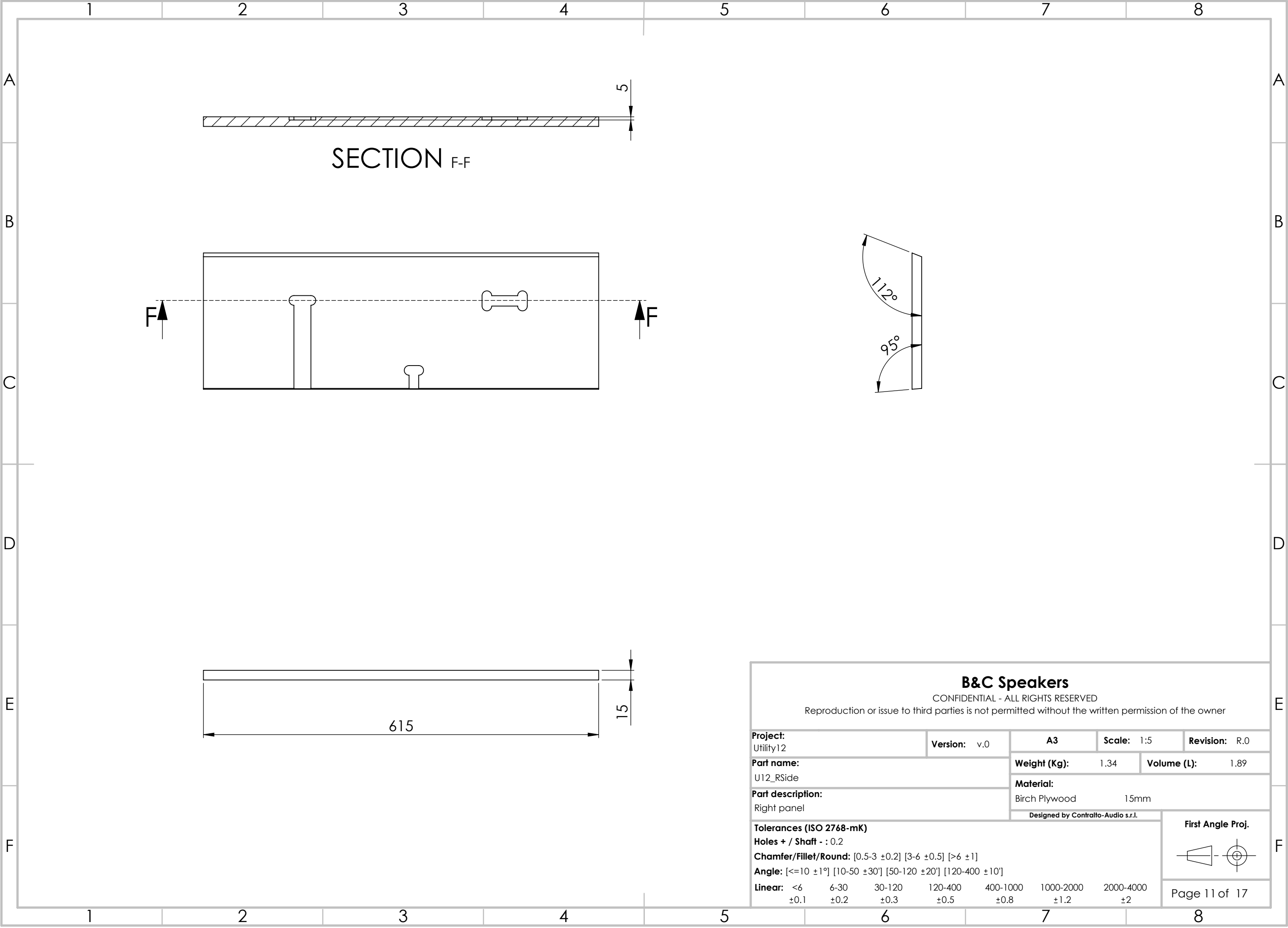


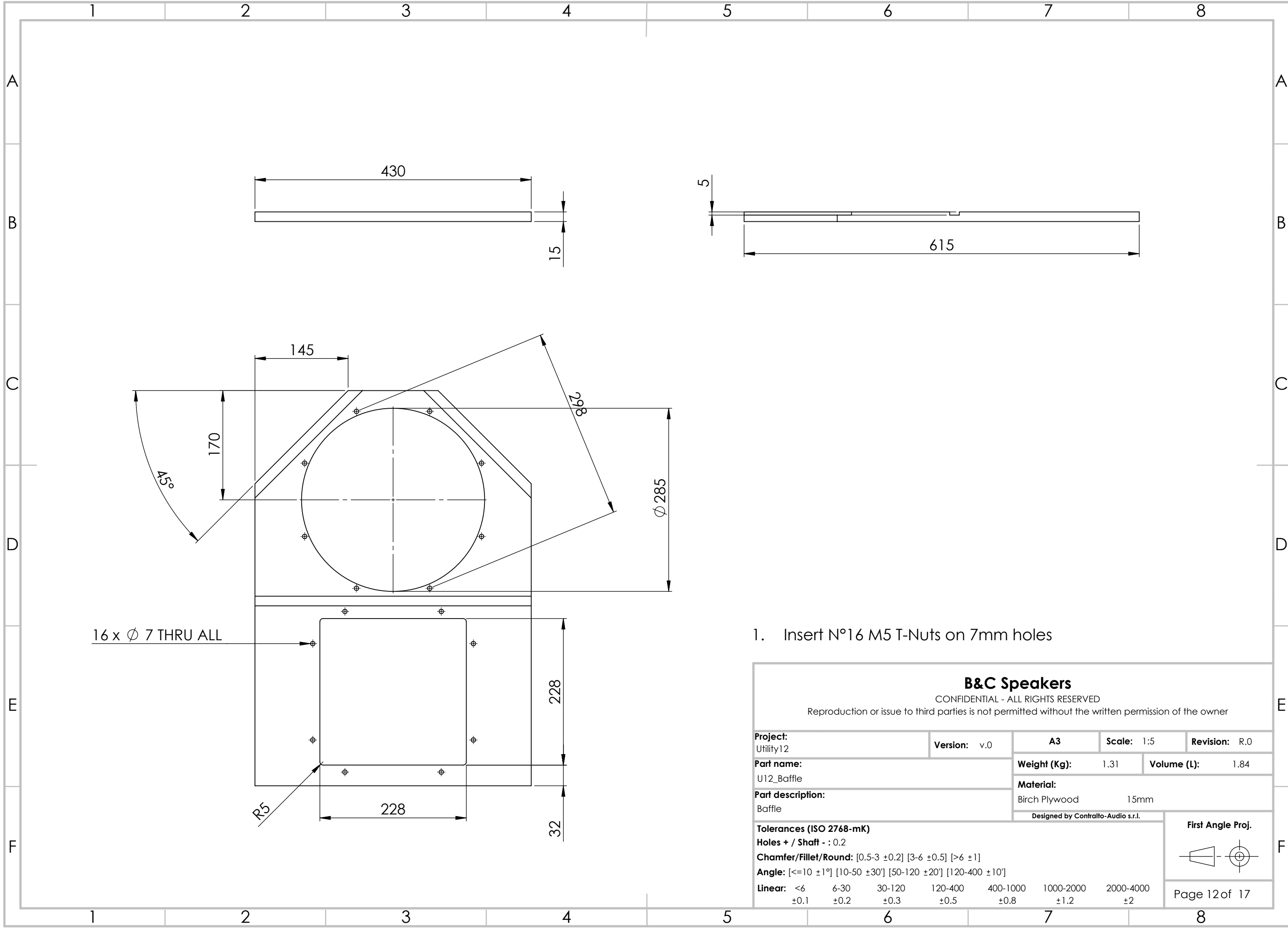




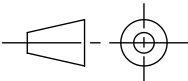
B&C Speakers							
CONFIDENTIAL - ALL RIGHTS RESERVED							
Reproduction or issue to third parties is not permitted without the written permission of the owner							
Project: Utility12		Version: v.0		A3	Scale: 1:10		Revision: R.0
Part name: U12_Back				Weight (Kg): 0.92		Volume (L): 1.30	
Part description: Back panel				Material: Birch Plywood 15mm			
				Designed by Contralto-Audio s.r.l.		First Angle Proj.	
Tolerances (ISO 2768-mK)							
Holes + / Shaft - : 0.2							
Chamfer/Fillet/Round: [0.5-3 ±0.2] [3-6 ±0.5] [>6 ±1]							
Angle: [<=10 ±1°] [10-50 ±30°] [50-120 ±20°] [120-400 ±10°]							
Linear:							
<6 ±0.1		6-30 ±0.2	30-120 ±0.3	120-400 ±0.5	400-1000 ±0.8	1000-2000 ±1.2	2000-4000 ±2
						Page 9 of 17	

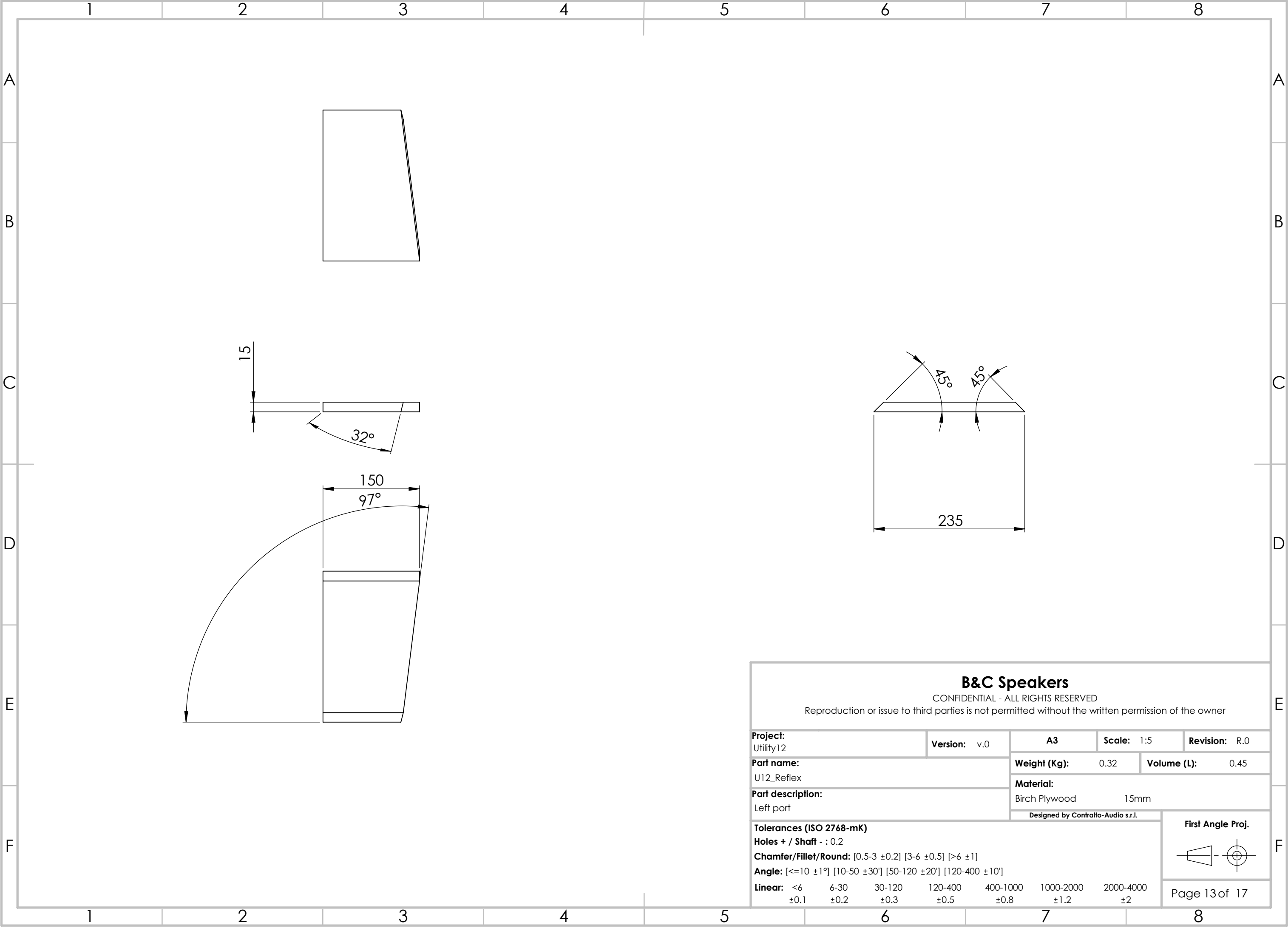






1. Insert N°16 M5 T-Nuts on 7mm holes

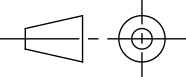
B&C Speakers							
CONFIDENTIAL - ALL RIGHTS RESERVED							
Reproduction or issue to third parties is not permitted without the written permission of the owner							
Project: Utility12		Version: v.0		A3	Scale: 1:5	Revision: R.0	
Part name: U12_Baffle			Weight (Kg): 1.31		Volume (L): 1.84		
			Material: Birch Plywood 15mm				
Part description: Baffle			Designed by Contralto-Audio s.r.l.			<div>First Angle Proj.</div> <div></div>	
Tolerances (ISO 2768-mK)						<div>Page 12 of 17</div>	
Holes + / Shaft - : 0.2							
Chamfer/Fillet/Round: [0.5-3 ±0.2] [3-6 ±0.5] [>6 ±1]							
Angle: [<=10 ±1°] [10-50 ±30°] [50-120 ±20°] [120-400 ±10°]							
Linear: <6 ±0.1		6-30 ±0.2	30-120 ±0.3	120-400 ±0.5	400-1000 ±0.8	1000-2000 ±1.2	2000-4000 ±2

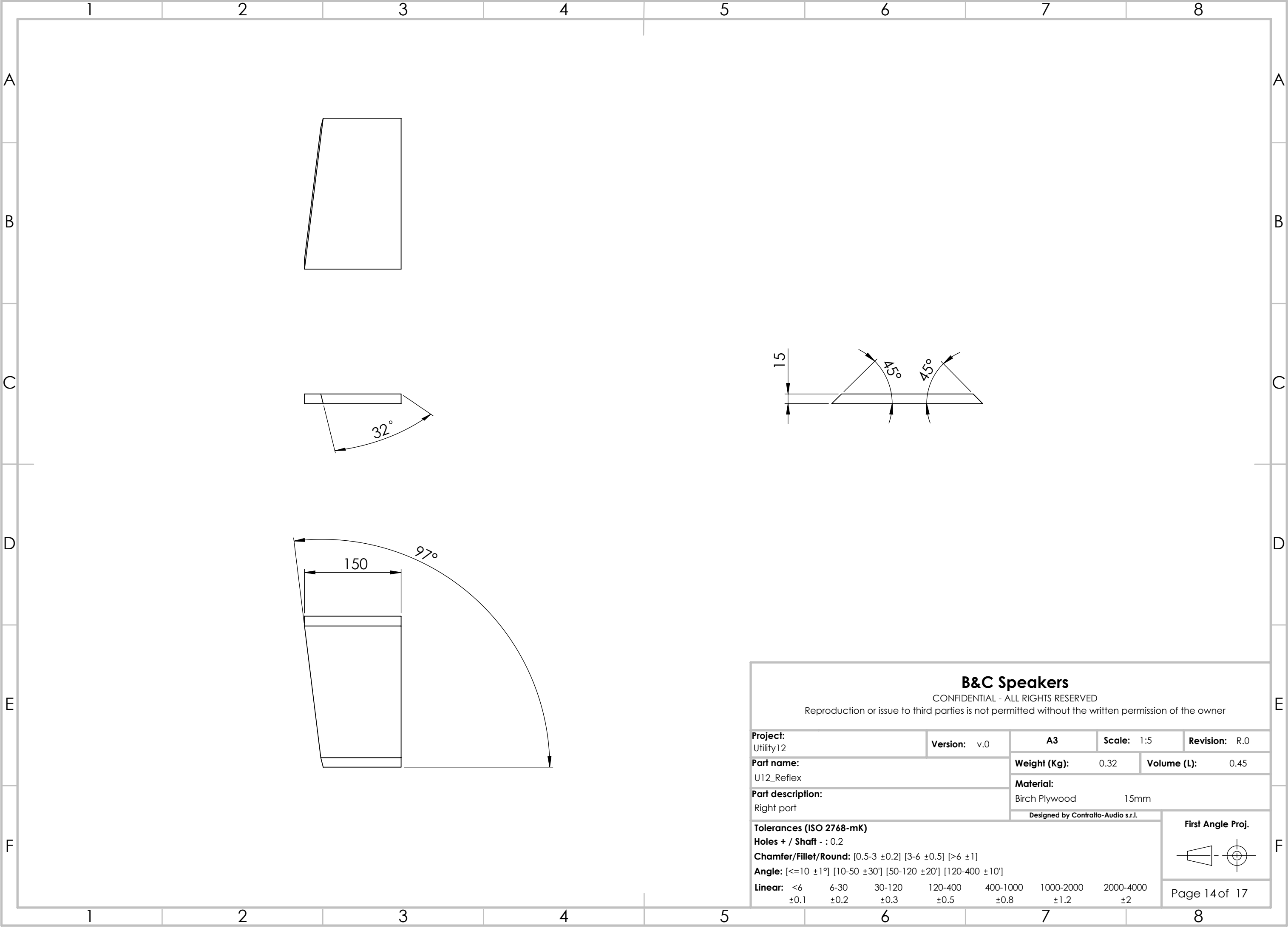


**B&C Speakers**

CONFIDENTIAL - ALL RIGHTS RESERVED

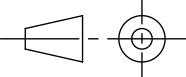
Reproduction or issue to third parties is not permitted without the written permission of the owner

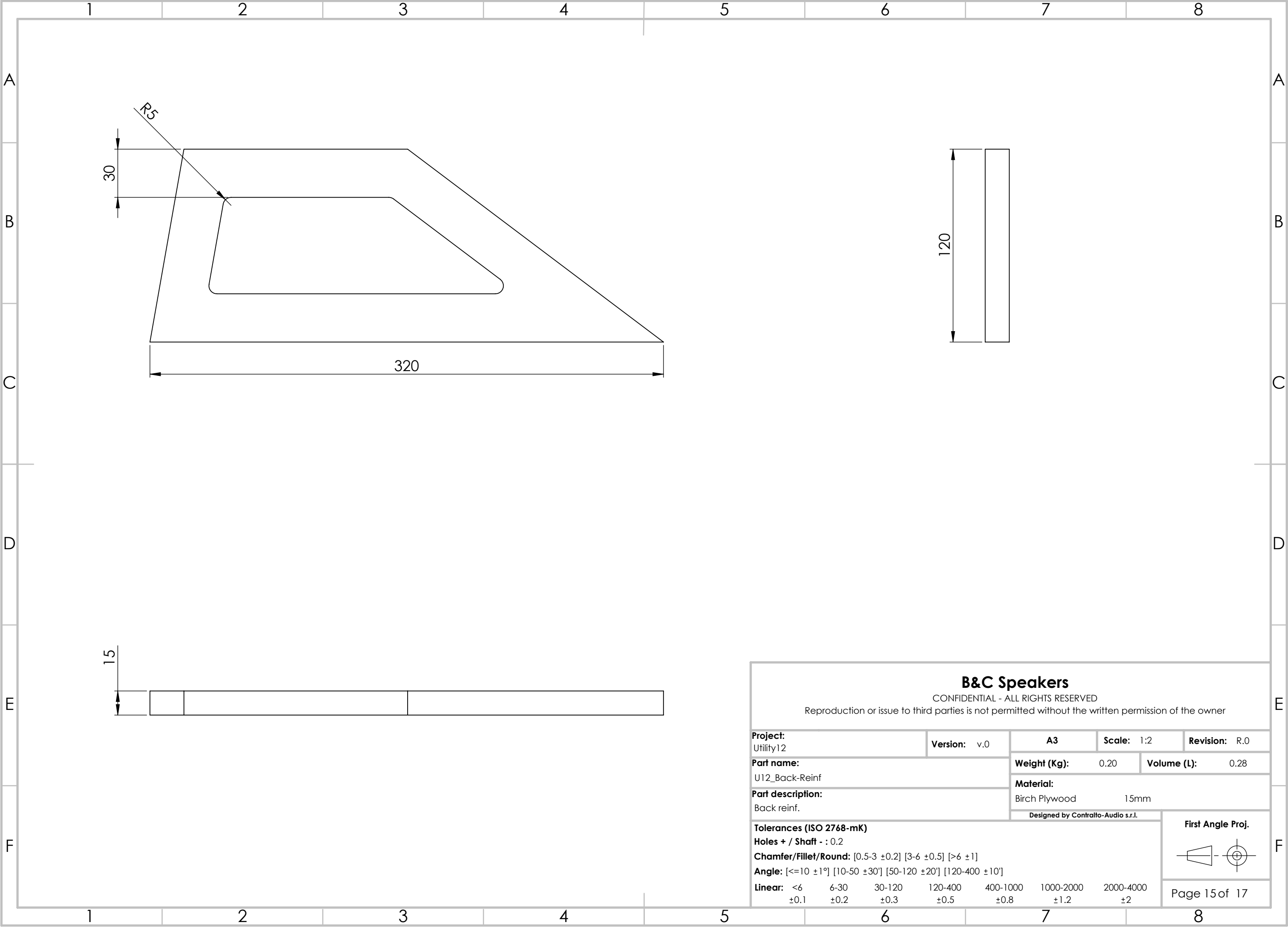
<b>Project:</b> Utility12			<b>Version:</b> v.0		<b>A3</b>		<b>Scale:</b> 1:5		<b>Revision:</b> R.0													
<b>Part name:</b> U12_Reflex					<b>Weight (Kg):</b> 0.32			<b>Volume (L):</b> 0.45														
<b>Part description:</b> Left port					<b>Material:</b> Birch Plywood 15mm																	
					Designed by Contralto-Audio s.r.l.				<b>First Angle Proj.</b> 													
<b>Tolerances (ISO 2768-mK)</b> <b>Holes + / Shaft - :</b> 0.2 <b>Chamfer/Fillet/Round:</b> [0.5-3 ±0.2] [3-6 ±0.5] [>6 ±1] <b>Angle:</b> [<=10 ±1°] [10-50 ±30'] [50-120 ±20'] [120-400 ±10'] <b>Linear:</b> <table><tr><td>&lt;6</td><td>6-30</td><td>30-120</td><td>120-400</td><td>400-1000</td><td>1000-2000</td><td>2000-4000</td></tr><tr><td>±0.1</td><td>±0.2</td><td>±0.3</td><td>±0.5</td><td>±0.8</td><td>±1.2</td><td>±2</td></tr></table>											<6	6-30	30-120	120-400	400-1000	1000-2000	2000-4000	±0.1	±0.2	±0.3	±0.5	±0.8
<6	6-30	30-120	120-400	400-1000	1000-2000	2000-4000																
±0.1	±0.2	±0.3	±0.5	±0.8	±1.2	±2																
									Page 13 of 17													

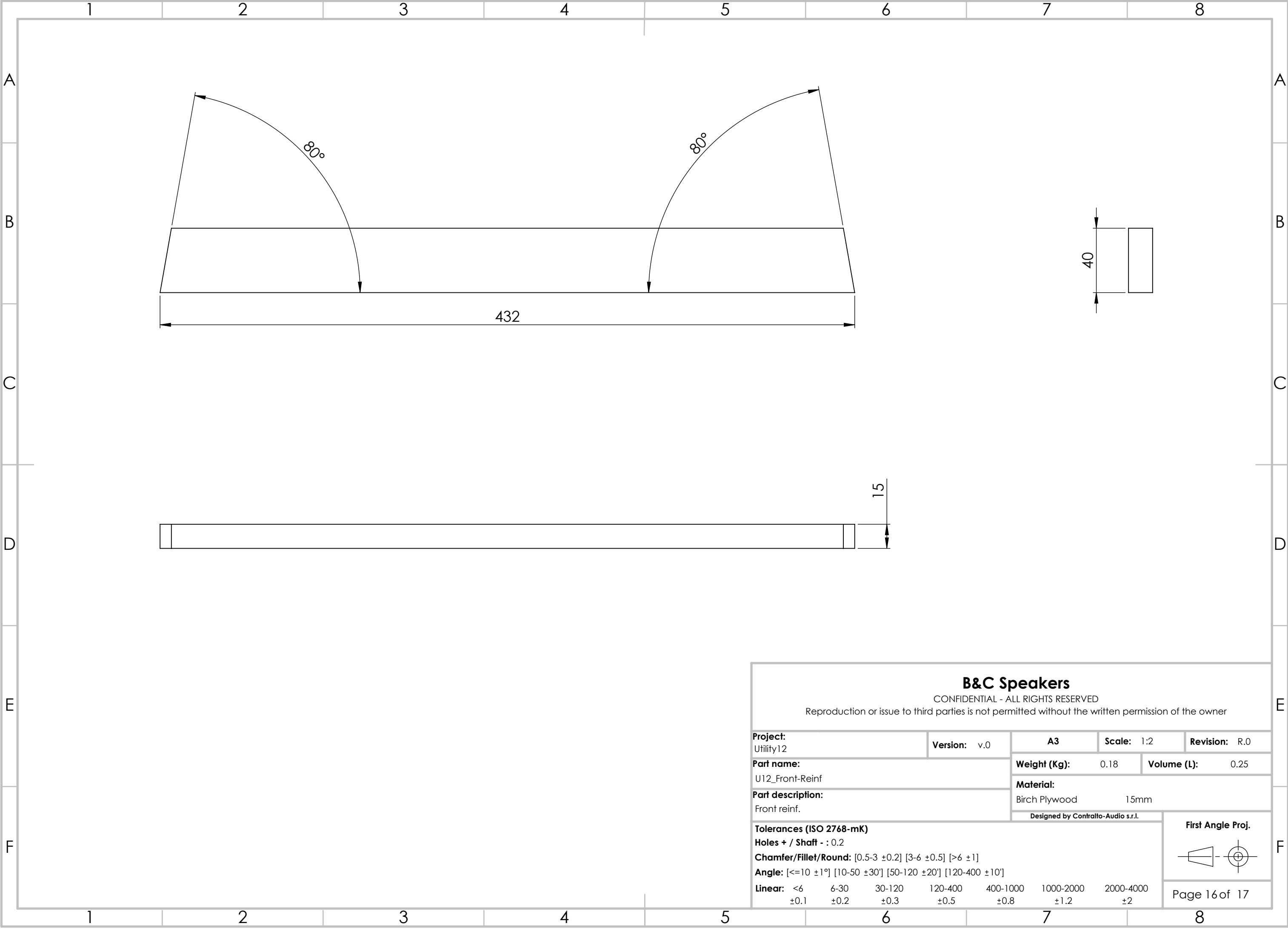


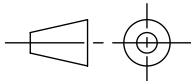
B&C Speakers

CONFIDENTIAL - ALL RIGHTS RESERVED  
Reproduction or issue to third parties is not permitted without the written permission of the owner

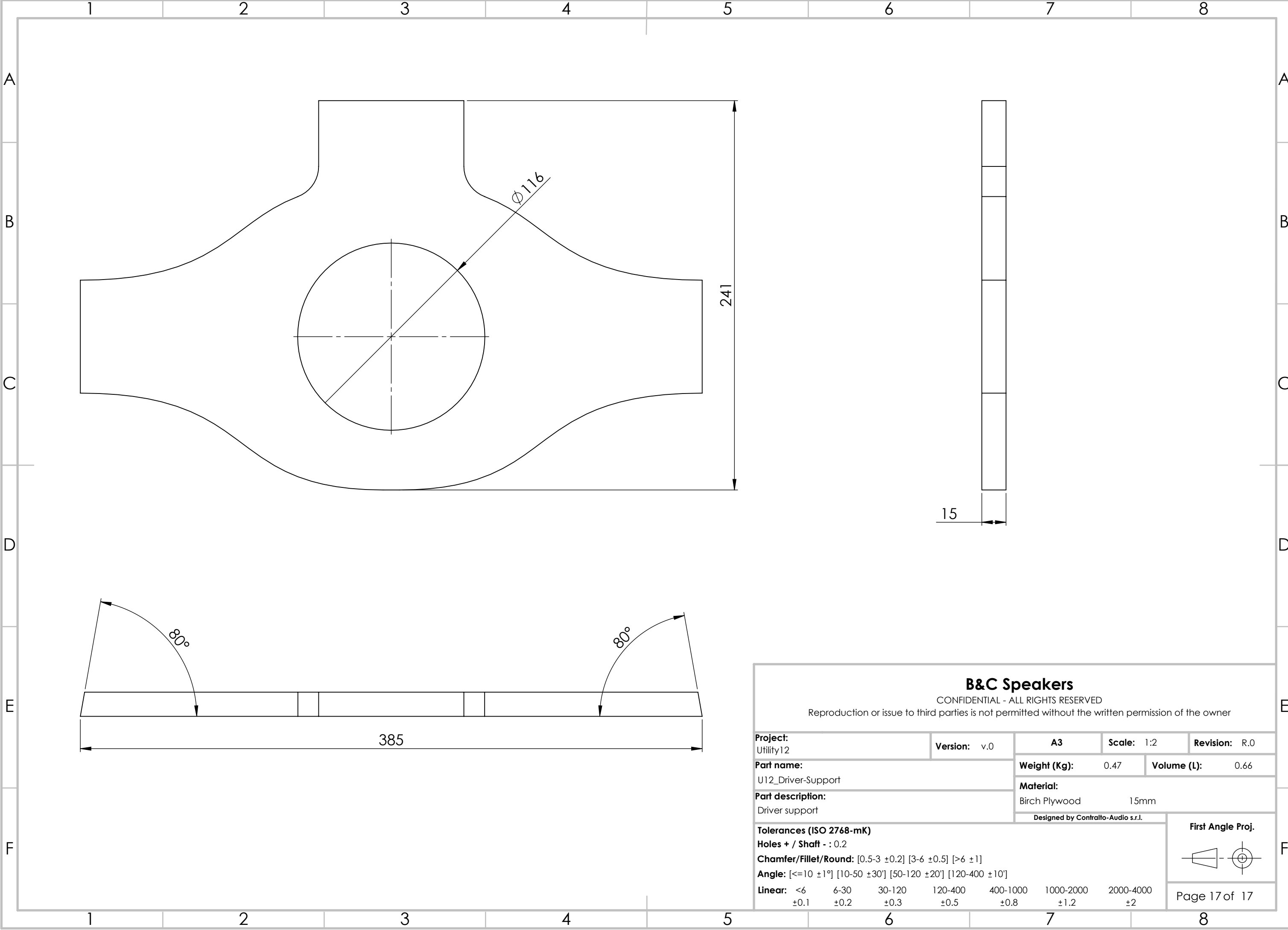
<b>Project:</b> Utility12			<b>Version:</b> v.0		<b>A3</b>		<b>Scale:</b> 1:5		<b>Revision:</b> R.0		
<b>Part name:</b> U12_Reflex					<b>Weight (Kg):</b> 0.32		<b>Volume (L):</b> 0.45				
<b>Part description:</b> Right port					<b>Material:</b> Birch Plywood 15mm						
					Designed by Contralto-Audio s.r.l.					<b>First Angle Proj.</b> 	
<b>Tolerances (ISO 2768-mK)</b> <b>Holes + / Shaft - : 0.2</b> <b>Chamfer/Fillet/Round:</b> [0.5-3 ±0.2] [3-6 ±0.5] [>6 ±1] <b>Angle:</b> [<=10 ±1°] [10-50 ±30'] [50-120 ±20'] [120-400 ±10'] <b>Linear:</b> <6 6-30 30-120 120-400 400-1000 1000-2000 2000-4000 ±0.1 ±0.2 ±0.3 ±0.5 ±0.8 ±1.2 ±2											
Page 14 of 17											





B&C Speakers							
CONFIDENTIAL - ALL RIGHTS RESERVED							
Reproduction or issue to third parties is not permitted without the written permission of the owner							
Project: Utility12		Version: v.0		A3	Scale: 1:2		Revision: R.0
Part name: U12_Front-Reinf				Weight (Kg): 0.18		Volume (L): 0.25	
Part description: Front reinf.				Material: Birch Plywood 15mm			
				Designed by Contralto-Audio s.r.l.		<div>First Angle Proj.</div> <div></div>	
<div>Tolerances (ISO 2768-mK)</div> <div>Holes + / Shaft - : 0.2</div> <div>Chamfer/Fillet/Round: [0.5-3 ±0.2] [3-6 ±0.5] [&gt;6 ±1]</div> <div>Angle: [&lt;=10 ±1°] [10-50 ±30'] [50-120 ±20'] [120-400 ±10']</div> <div>Linear: &lt;6 6-30 30-120 120-400 400-1000 1000-2000 2000-4000</div> <div>±0.1 ±0.2 ±0.3 ±0.5 ±0.8 ±1.2 ±2</div>							
						Page 16 of 17	

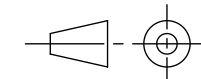




**B&C Speakers**

CONFIDENTIAL - ALL RIGHTS RESERVED

Reproduction or issue to third parties is not permitted without the written permission of the owner

Project: Utility12			Version: v.0		A3		Scale: 1:2		Revision: R.0		
Part name: U12_Driver-Support					Weight (Kg): 0.47		Volume (L): 0.66				
Part description: Driver support					Material: Birch Plywood 15mm						
					Designed by Contralto-Audio s.r.l.				First Angle Proj. 		
Tolerances (ISO 2768-mK)											
Holes + / Shaft - : 0.2											
Chamfer/Fillet/Round: [0.5-3 ±0.2] [3-6 ±0.5] [>6 ±1]											
Angle: [<=10 ±1°] [10-50 ±30°] [50-120 ±20°] [120-400 ±10°]											
Linear:		<6	6-30	30-120	120-400	400-1000	1000-2000	2000-4000		Page 17 of 17	
		±0.1	±0.2	±0.3	±0.5	±0.8	±1.2	±2			